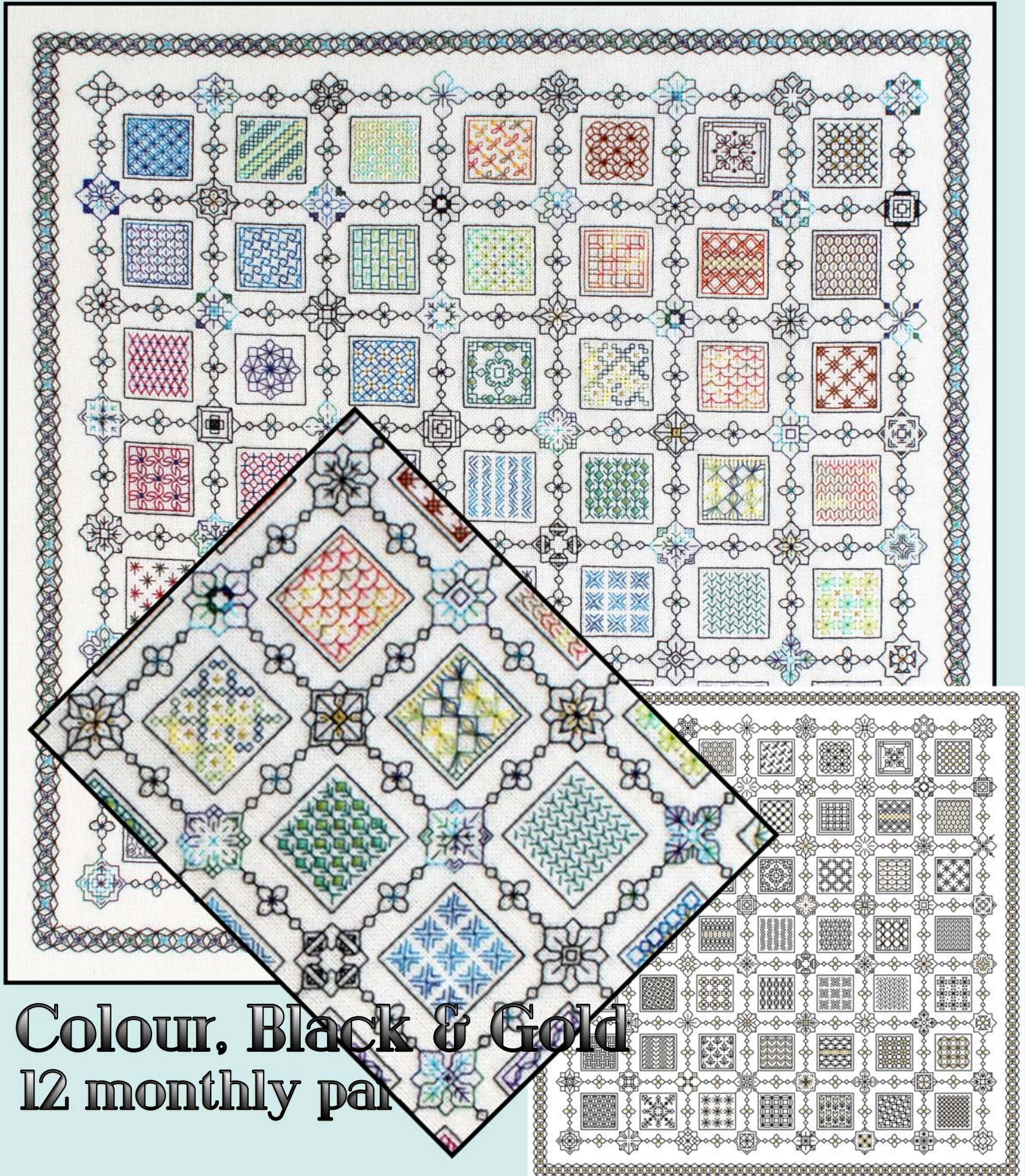


'TINY TREASURES'

Square - Part 7



'Tiny Treasures' Square Design Part 7

Design area: 15.29 x 15.29 inches

Stitches: 214 x 214

Material:

Zweigart 28 count evenweave or 14 count Aida, 22 x 22 inches

If 25 count Lugana is used: 24 x 24 inches

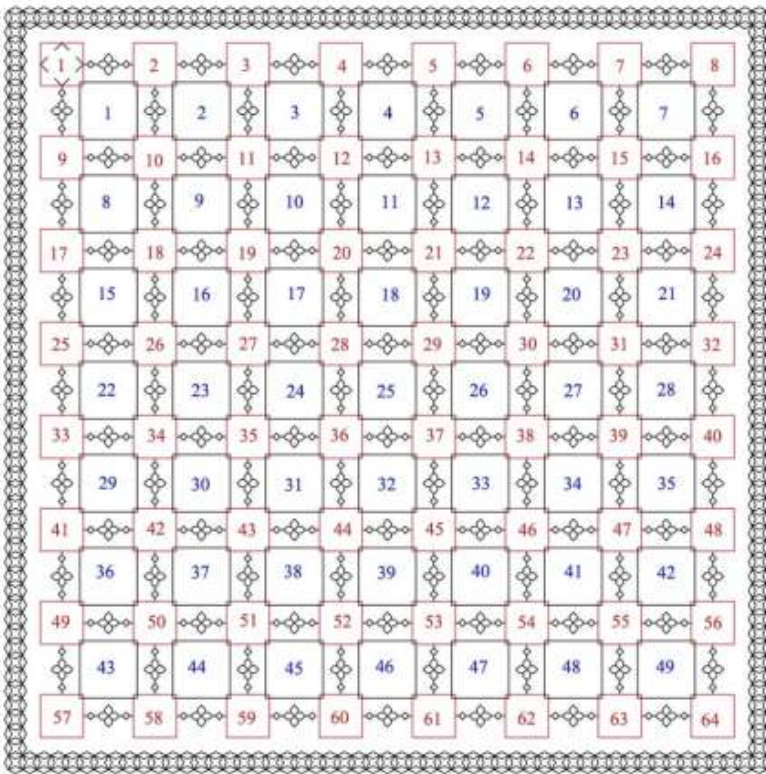
Stitches used:

Back stitch, one strand of floss

Cross stitch two strands of floss

Evenweave: stitches are worked over 2 threads unless the pattern indicates otherwise.

Cross stitch: stitches are worked over two threads or one block unless the pattern indicates otherwise.



Square Pattern Layout

Design area: 15.29 x 15.29 inches

Material: Zweigart 28 count evenweave or 14 count Aida, 22 x 22 inches

64 Flower motifs

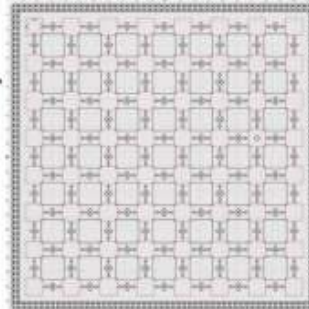
49 Pattern Blocks

112 Mini links

Border = 226 Tiny Treasures

Each flower can be a different colour

Each pattern block can be a different colour



1. Work Part 7 as follows:

Finish off any patterns from previous parts.

Add beads after the whole embroidery has been completed.

I hope you enjoy reading the information and working the design.

If you have any queries please contact:
lizalmond@blackworkjourney.co.uk

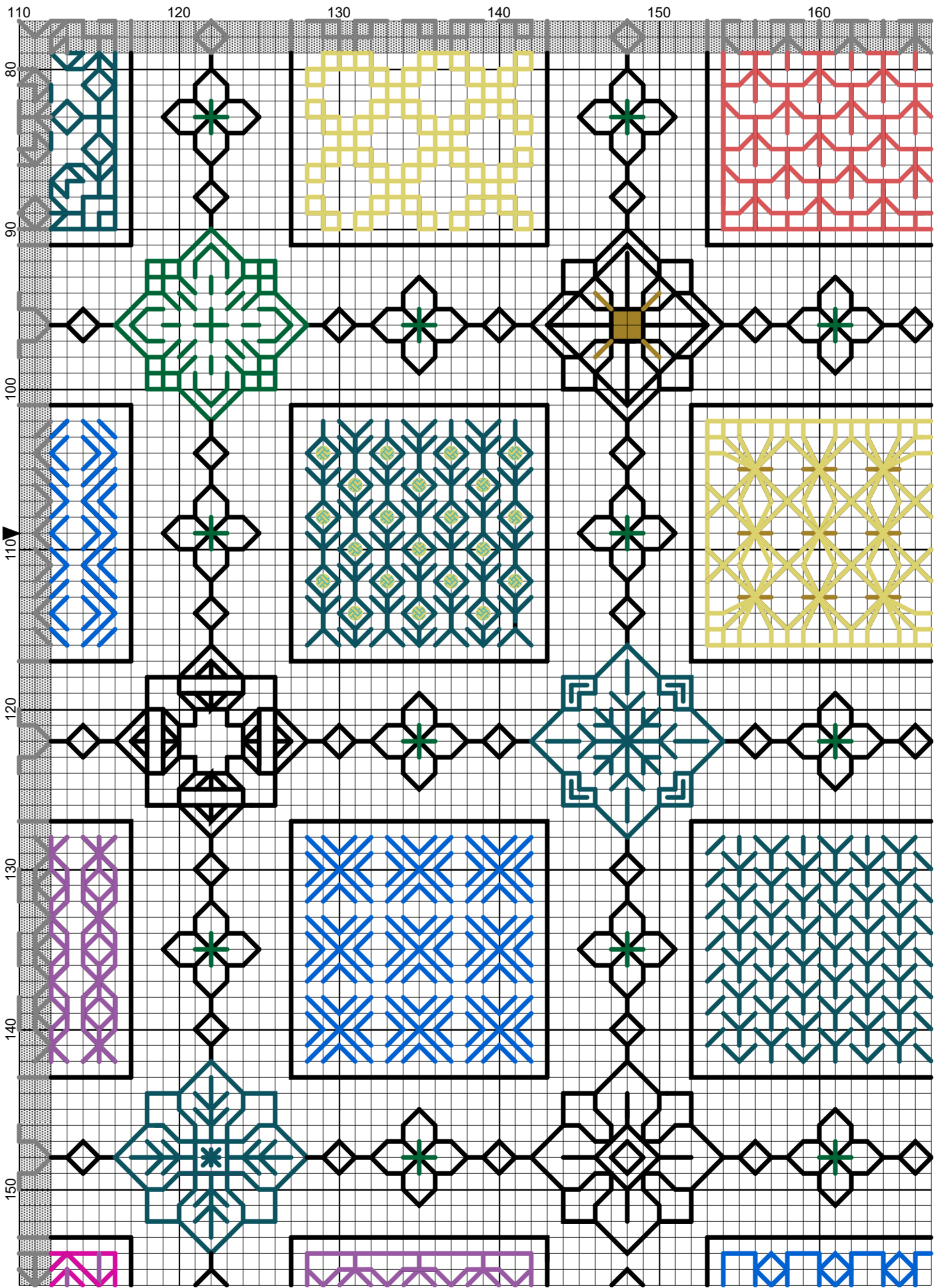
Part 7 Square design Embroidery



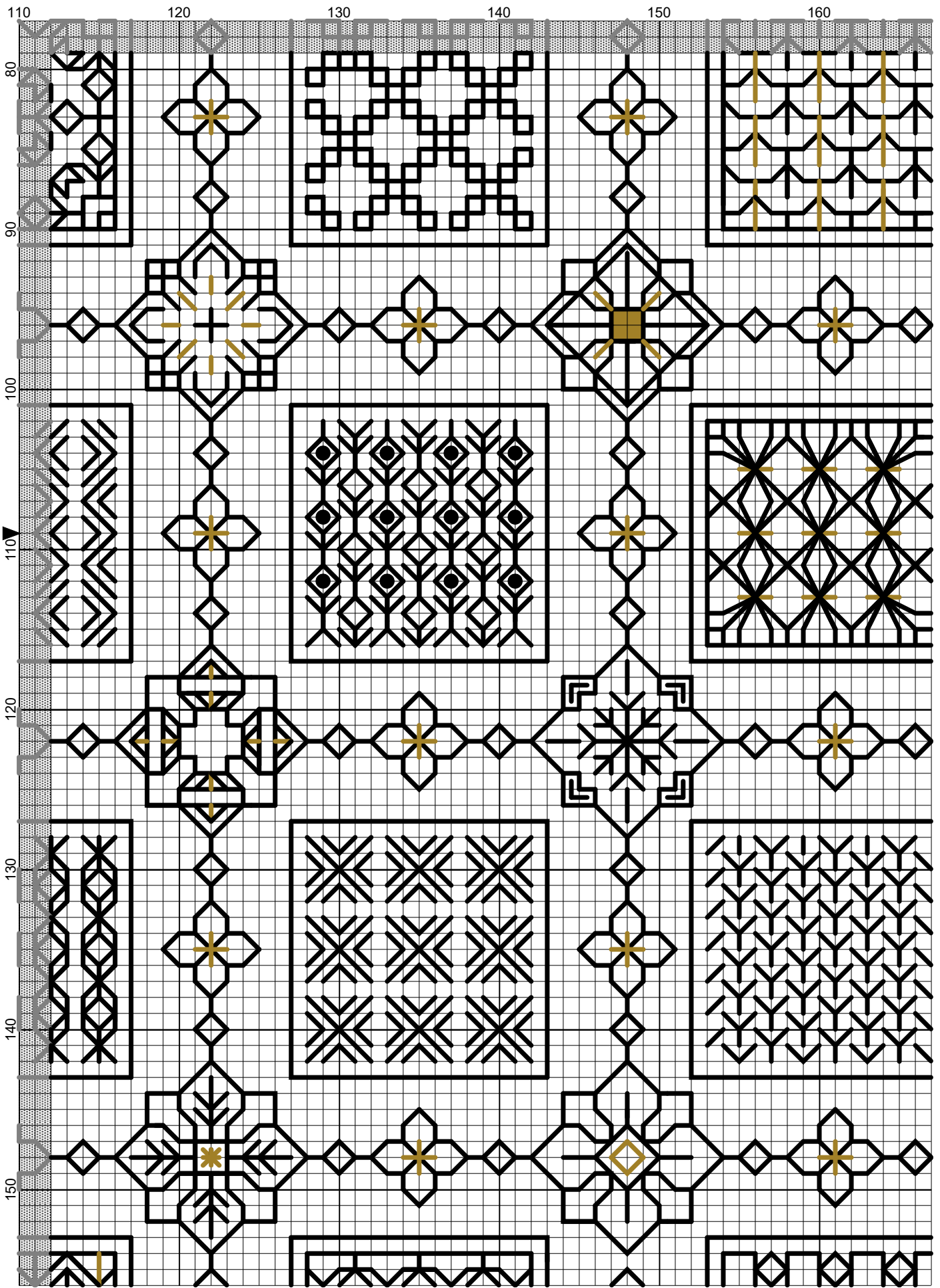


Part 7 Extract from Embroidery

Tiny Treasures Square



Elizabeth Almond



Elizabeth Almond